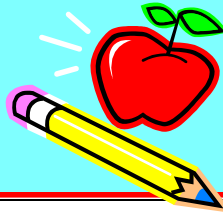


# PEEP POST



Mrs. Mercer  
573-762-9653 ext. 1125  
[amercer@newburg.k12.mo.us](mailto:amercer@newburg.k12.mo.us)  
Ms. Smith  
573-762-9653 ext. 1124  
[dsmith@newburg.k12.mo.us](mailto:dsmith@newburg.k12.mo.us)

## This Way to Pre K!

### Important Dates

- September 4 No School  
Labor Day
- September 22 No School PD  
Day

### Let's Sing

#### To the tune of Farmer in the Dell

I like to come to school.  
I like to come to school.  
I like to come to school each day.  
I like to come to school.

I like to play outside.  
I like to play outside.  
I like to come to school each day.  
I like to play outside.

I like to share my toys.  
I like to share my toys.  
I like to come to school each day.  
I like to share my toys.

### Classroom Information

- Please send a change of clothes including pants, shirt, underwear, and socks in a Ziploc bag labeled with your child's name.
- Your child will bring home a daily folder. Please empty its contents nightly and initial the behavior calendar block for that day. The folder should be returned to school each day.
- If you are planning to pick up or drop off your child, you may walk to our classrooms, and wait at the benches labeled "Parent Pick-Up Point". Please do not enter our classroom when the doors are shut as our learning time is valuable. Also due to time restraints, bus riders will be dismissed first, and loaded before car riders are released. Please be patient during dismissal, as the safety of all students is our first priority. Only individuals listed on your child's release form will be allowed to pick your child up.
- We are in need of extra Crayola 24 pack crayons. If you are able to donate a pack, it would be greatly appreciated!